

**(#5395)**  
**SILVER DOLLAR ESTATES**  
**AREA 1 - PHASE 2**  
PORTION OF N½ SECTION 8  
T20N - R19E

Assessor's Map Number

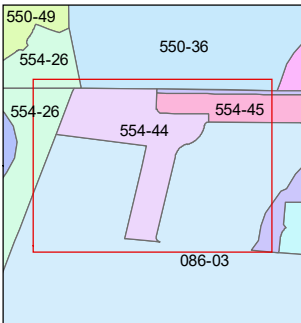
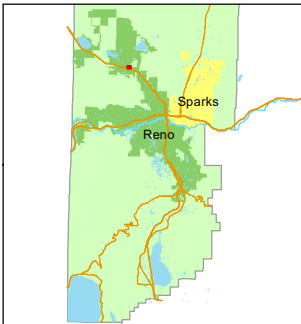
**554-44**

STATE OF NEVADA  
**WASHOE COUNTY**  
**ASSESSOR'S OFFICE**  
1001 East Ninth Street, Building D  
Reno, Nevada 89512  
(775) 328-2231



Feet  
0 20 40 60 80

1 inch = 80 feet



created by: SR 11/18/2020

updated: \_\_\_\_\_

area previously shown on map(s):

086-03

NOTE: This map was prepared for the use of the Washoe County Assessor for assessment and illustrative purposes only. It does not represent a survey of the premises. No liability is assumed as to the sufficiency or accuracy of the data delineated hereon.